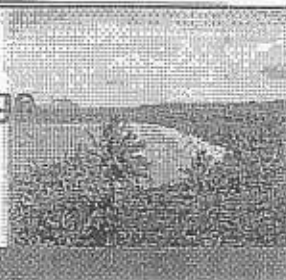


Cairns

5 Days / 3 Nights Hotel Package

開恩茲五日三夜自遊行

Ex HKG valid for travel between 01Mar - 31Mar10



HKD6190up

Promotion

(Min. 2 Adults)

Note 1: Any stay involves both higher & lower rate, the higher rate will be applied for entire stay.
Note 2: Hotel stay must be completed on the mentioned period as below.

Australia Package

Issued on 12Feb10

Departure Date	HKG/CNS	CNS/HKG	Surcharge Amount	Class
01Mar-31Mar	Any Flight	Any Flight	No	S



CATHAY PACIFIC

Add On Sector	Carrier	Surcharge Amount	Class code	Remark
Within ADL, BNE, MEL & SYD only	QF	HKD750/Sector	Same as CX Int'l Sectors	Max. 2 sectors are permitted
	CX			
*AUST Cities / *AUST Cities or v.v.	QF	HKD1150/Sector	Same as CX Int'l Sectors	Max. 3 sectors are permitted
*AUST Cities : Australia Domestic Cities except PER	CX			
PER / *AUST Cities or v.v	QF	HKD1900/Sector		

Package price in HKD per person / Extra night in HKD per room

Hotel	Cat.	Staying Period	Bk't	Adult	Adult	Adult	Child	Extension Night
酒店	級數	住酒店數	單雙	成人	成人	成人	小童	單/雙/三
Coral Tree Inn	3	Until 31Mar	✗	6190	7290	5190	4090	950 / 950 / 120
Colonial Club	4	Until 31Mar	✓	6190	7450	6090	4990	1000 / 1000 / 420
Palm Royale	4	Until 31Mar	✓	6190	7450	5450	4290	1000 / 1000 / 190
Rydges Plaza	4	Until 31Mar	✓	TBA	TBA	TBA	TBA	TBA
Holiday Inn Cairns	5	Until 31Mar	✓	6350	7850	6290	5190	1140 / 1140 / 480
Hilton Cairns	5	Until 31Mar	✓	6890	8890	6650	5490	1480 / 1480 / 590
Shangri-La Marina	5	Until 31Mar	✓	7090	9290	6550	5450	1610 / 1610 / 500
Cairns International	5	Until 31Mar	✓	TBA	TBA	TBA	TBA	TBA

Price inclusive of :-

- > Roundtrip air ticket by Cathay Pacific Airways
- > 3 nights hotel accommodation at your choice
- > Hong Kong Airport Security Service Charge
- > 0.15% TIC Levy

Remarks :-

- > Booking Class : S Class
- > Ticket Validity : 3-14Days
- > VALID ON FLIGHT DATE SHOWN ONLY & E TICKET ONLY
- > Tickets are non-endorsable, non-reroutable & non-refundable
- > Packages are valid for min. 2 passengers traveling together on same outbound, inbound, flights, dates.
- > Booking must be under One PNR and guests must be check in at the airport simultaneously.
- > NON-Refundable for all No Show Booking
- > CX GV2 Fare IN (Date) OUT (Date) at XXX Hotel* must be input in OSI field
- > All prices & conditions are subject to change without prior notice.